

Implementation of community-based correction in reducing recidivism among offenders in Northern Samar

Daiselyn A. Dasig

Bicol College, Philippines

Corresponding Author email: ddaiselyn@gmail.com

Received: 20 March 2026

Revised: 23 April 2026

Accepted: 26 April 2026

Available Online: 27 April 2026

Volume 1 (2026), Issue 2, P-ISSN – 3116-3904; E-ISSN - 3116-3912

<https://doi.org/10.63498/ijsdcjlec4>

Abstract

Aim: This study assessed the implementation of community-based corrections in Northern Samar, Philippines, as a mechanism for reducing recidivism. It aimed to profile probationers, evaluate key correctional components, identify perceptual differences among stakeholders, and determine challenges affecting offender reintegration.

Methodology: A descriptive-comparative research design was employed. Data were collected from probationers (n=121), probation officers, and Volunteer Probation Assistants (VPAs). Statistical tools such as weighted mean, Kendall's Coefficient of Concordance (W), and t-tests were used to analyze implementation levels and differences in perceptions.

Findings: Results revealed that most probationers were economically vulnerable, middle-aged males with low educational attainment. Offenses were largely survival-driven, particularly involving environmental and drug-related violations. While community-based corrections were generally implemented, gaps were identified in staffing, logistics, and service delivery. Significant differences in stakeholder perceptions indicated that officers rated implementation more positively than probationers and VPAs. Major challenges included insufficient personnel, limited resources, and low public awareness.

Conclusion: The study concludes that although procedural compliance is evident, limitations in field-level supervision and support hinder effective rehabilitation. Strengthening community-based corrections requires an integrated and human-centered approach that enhances supervision, resource allocation, and rehabilitation services to improve reintegration outcomes and ensure long-term public safety.

Keywords: *community-based correction; recidivism; probationers; Northern Samar; rehabilitation; stakeholder perception; correctional reform*

INTRODUCTION

The global criminal justice system continues to face significant challenges in addressing recidivism and ensuring long-term public safety. Despite the continued reliance on incarceration as a primary crime control strategy, recent empirical evidence suggests that post-conviction imprisonment often has a negligible impact on the probability of reoffending. High-quality reviews of judge instrumental-variable and regression discontinuity studies indicate that the effects of incarceration are highly heterogeneous; while rehabilitative programming can lead to recidivism-reducing effects, the absence of such programming often results in criminogenic outcomes. Furthermore, evidence consistently points to the deleterious impact of pretrial detention on post-release behavior, suggesting that the experience of detention itself may undermine future stability (Loeffler, 2022). These findings reflect a growing global concern that traditional punitive approaches are insufficient, highlighting the need for more effective, evidence-based correctional strategies that prioritize rehabilitative intervention over mere incapacitation.

In response, contemporary criminological trends emphasize the increasing importance of community-based corrections (CBC)—such as probation, parole, and reentry programs—as more sustainable approaches to crime prevention and public safety. Recent evidence suggests that the focus on CBC is a mechanical necessity to address the failures of conventional incarceration, particularly in mitigating prison overcrowding and promoting social integration. A global analysis of correctional systems indicates that the success of these non-custodial approaches is



International Journal of Security, Defense, Criminal Justice, Law Enforcement, and Corrections (IJSDCJLEC)

P - ISSN: 3116-3904; E - ISSN: 3116-3912

PRC-CPD Accredited
Provider: PTR-2025-749

National Book Development Board
Registration as Book Publisher
(Print & Digital): 6312

heavily contingent upon a robust legal framework, strong policy support, and active community engagement (Hamja & Al Ghifari, 2024). For instance, when judicial supervision and community-based interventions are individualized and consistently applied, studies have recorded a reduction in recidivism by up to 33%. This underscores that transitioning from a punitive-heavy model to a holistic, reintegration-focused framework is essential for maintaining program integrity and ensuring the sustainability of correctional strategies across different legal jurisdictions.

However, despite these advancements, correctional systems worldwide continue to experience persistent operational challenges that undermine program effectiveness. These include inadequate supervision, limited institutional resources, and inconsistencies in program delivery. Recent research suggests that these systemic issues are exacerbated by organizational stressors—specifically heavy administrative paperwork and insufficient human resources—which take a significant toll on the mental health and well-being of community correctional workers. This degradation of officer well-being in turn compromises their capacity to effectively supervise and support individuals on their caseloads (Norman, 2021). Such structural and organizational tensions create a "presence gap" that undermines the relational factors necessary for successful rehabilitation, presenting ongoing risks to public safety and highlighting the need for improved implementation of community-based correction programs.

In the Philippine context, similar challenges are evident, particularly in rural areas where resource constraints and geographic dispersion complicate the delivery of correctional services. In Northern Samar, these issues are reflected in local correctional data indicating that fifteen (15) probationers have reoffended within the last five years, raising concerns about the effectiveness of existing community-based correction mechanisms. This pattern of recidivism suggests potential gaps in supervision practices, rehabilitation efforts, and reintegration support systems that require systematic investigation.

Despite the growing body of recent international research on community-based corrections, there remains a significant research gap in understanding how these evidence-based practices are implemented in rural and resource-constrained settings. Most contemporary studies focus on generalized or urban contexts, leaving localized dynamics—such as those in Northern Samar—underexplored. This gap limits the ability of policymakers and practitioners to design context-specific interventions that effectively address recidivism in provincial environments.

In response, the present study examines the implementation of community-based corrections in Northern Samar, focusing on the experiences of probation officers, probationers, and Volunteer Probation Assistants (VPAs). It aims to identify operational and procedural challenges in supervision, rehabilitation, and reintegration processes. By addressing these issues, the study seeks to contribute to public safety, justice reform, and institutional improvement, ultimately supporting the development of more responsive and effective correctional systems that reduce recidivism and promote successful offender reintegration.

Review of Related Literature and Studies

Global Literature on Correctional Practices and Recidivism

In global literature, recidivism serves as a primary metric for evaluating justice systems, with data from 33 countries identifying the two-year reconviction rate as the most prevalent benchmark for post-release outcomes. This international data reveals a broad spectrum of results for formerly incarcerated individuals, ranging from a low of 17.6% in Norway to a high of 54.9% in Australia. Similarly, for community-sentenced individuals across 20 nations, the two-year reconviction window remains the standard analytical tool, with rates fluctuating significantly between Chile at 9.7% and Denmark at 46.6% (Yukhnenko et al., 2023). By examining these divergent figures, research can better contextualize the varying degrees of success found in both custodial and community-based rehabilitative frameworks worldwide.

Beyond these global statistics, the practical disadvantages of institutional corrections often stem from specific conditions of confinement which directly impact rehabilitative success. Recent research involving 600 inmates in South-western Nigeria found a statistically significant relationship ($p < 0.05$) between correctional conditions and the effectiveness of rehabilitation policies, noting that overcrowded and poor hygienic environments actively hinder inmate reform (Abrifor et al., 2023). The study further revealed that neglect of inmate well-being leads to a violation of rights that discourages participation in rehabilitation programs. Ultimately, these systemic deficiencies suggest that poor custodial conditions serve as a major barrier to successful reintegration.

This institutional failure is further compounded by the "stickiness" of criminal labels and racialized stigmas that persist after release. Analyzing the narratives of millennial men in Philadelphia, researchers identified that individuals struggle to craft positive identities because a criminal history is often presumed by society regardless of



International Journal of Security, Defense, Criminal Justice, Law Enforcement, and Corrections (IJSDCJLEC)

P - ISSN: 3116-3904; E - ISSN: 3116-3912

PRC-CPD Accredited
Provider: PTR-2025-749

National Book Development Board
Registration as Book Publisher
(Print & Digital): 6312

actual past behavior (Fader et al., 2022). This societal labeling forces individuals to engage in "redemption bids"—performances intended to defy social stigma and reclaim a pro-social status.

In contrast, contemporary desistance research emphasizes the role of pro-social identity construction through community engagement. A qualitative analysis identified four pillars of successful desistance: internal motivation, shifts in self-perception, supportive relationships, and the creation of community space (Hinck et al., 2023). This underscores that community-centric spaces help fill the gap left by traditional, often inadequate, custodial systems, supporting the long-term "redemption scripts" necessary for reducing recidivism.

Furthermore, academic tradition since the 1970s has emphasized centering gender in correctional research. A recent scoping review highlights that while gender shapes pathways into the justice system, there is limited data on gender-responsive strategies specifically within community corrections (Opsal & Luxton, 2024). Integrating these approaches is essential for practitioners to maximize the efficacy of community-based reform, effectively bridging the gap between traditional custodial systems and the unique requirements of modern "redemption scripts."

Local Studies in the Philippine Context

In the Philippine context, the challenge of ranking third globally in jail overcrowding underscores the urgent need for alternatives to incarceration. Recent research indicates that the Parole and Probation Administration (PPA) effectively leverages multi-sectoral collaborations to address the diverse needs of parolees and probationers (Verdadero & Donato, 2026). However, despite the success of these partnerships, the study identifies persistent operational challenges, most notably inadequate resources, which continue to hinder service delivery.

Complementing these administrative findings, evaluations of local jail systems emphasize the necessity of structured reformative programming. A study evaluating the Therapeutic Community Modality Program (TCMP) in the Lucena City District Jail found that program completion significantly reduced recidivism, with completers showing a 10% re-offender rate compared to 30% among non-completers (Marquez, 2025). The research underscores that the TCMP's success is rooted in behavioral transformation—specifically in self-control and decision-making—supported by a reintegration framework that bridges the gap between incarceration and community linkages.

Additionally, a qualitative study in the Isabela Province investigated mandatory monthly reporting as a key mechanism of supervision. The research found that while reporting fosters accountability, structural and logistical barriers often undermine its rehabilitative potential (Tad-Awan & Lapitan, 2026). The findings suggest that improving the efficacy of community corrections in the Philippines requires adaptive supervision strategies, such as technology-enabled reporting.

Finally, an analysis of recidivism at the Bureau of Jail Management and Penology – National Capital Region (BJMP-NCR) provides a profile of reoffending patterns (Delfin et al., 2023). The results revealed that young, married males, particularly those involved in drug-related cases with shorter prison stays, demonstrate a higher tendency to recidivate. While predictive variables showed no statistically significant association with the overall pattern of recidivism during the COVID-19 pandemic, the findings underscore the necessity of profiling at-risk individuals to better tailor community-based reintegration efforts.

Despite the legal evolution of probation in the Philippines, a significant research gap persists in the "Perceptual Divide" between the implementers and the beneficiaries of these programs. Most existing scholarship remains centered on "process metrics"—prioritizing administrative consistency and legal compliance. Consequently, the "Functional Divergence"—where the lived realities of social stigma and logistical paralysis clash with national reporting targets—remains insufficiently documented.

Furthermore, current correctional discourse often relies on macro-level data that emphasizes urban-centric criminal patterns. This creates a gap in understanding provinces like Northern Samar, which exhibit unique patterns of "survival-driven" environmental crimes. Traditional modules frequently fail to provide the dual-track strategies required to address these specific rural contexts.

The present study addresses these gaps by evaluating the implementation of community-based corrections through a multi-stakeholder lens. By comparing the perspectives of officers, probationers, and volunteers, the research contributes to Philippine criminological scholarship by proposing the Integrated Community-Based Correction Theory (ICCT)—a convergent model tailored to the specific socio-economic and logistical realities of the provincial context.



Theoretical Framework

This study is anchored on a multi-dimensional theoretical framework that synthesizes established criminological models with a newly proposed localized framework to interpret the implementation of community-based corrections in Northern Samar. The research is guided by Cullen's Social Support Theory, Rehabilitation Theory, the Risk-Need-Responsivity (RNR) Model, and the researcher-developed Integrated Community-Based Correction Theory (ICCT).

The primary guiding lens of this research is Social Support Theory (Cullen, 1994), which posits that instrumental and emotional support from the community are fundamental in preventing recidivism by reducing criminal stigma and promoting successful reintegration. This theory is particularly relevant for interpreting the role of Volunteer Probation Assistants (VPAs), who serve as essential "force-multipliers" in the monitoring of clients—a critical function given the chronic shortage of professional officers within the Parole and Probation Administration (PPA). Recent scholarship highlights that while VPAs are highly knowledgeable in their roles as direct supervisors and maintain strong collaborative partnerships with professional officers, they must navigate significant challenges, including client non-cooperation and personal safety threats (Verdadero et al., 2023). Ultimately, this mentorship strengthens an offender's stake in conformity through pro-social attachments, proving that the VPA program is not merely an administrative resource but an indispensable asset for the holistic reformation and successful community reintegration of clients.

Complementing this is Rehabilitation Theory, which provides the foundational rationale for the "Correctional" aspect of the system by emphasizing the "rehabilitative ideal." This framework moves away from traditional punitive models that calibrate punishment solely to the nature of the crime, adopting instead a medical-inspired approach where criminal behavior is viewed as the result of biological, psychological, or social risk factors. It posits that for reform to be successful, underlying causes must be accurately diagnosed and treated through individualized interventions rather than one-size-fits-all sanctions. This necessity for specialized understanding is further supported by the Special Resiliency Theory, which suggests that reentry experiences are heavily influenced by the social and demographic backgrounds of the offenders. Recent research highlights that white-collar offenders, while possessing unique resiliencies that aid in their adjustment post-incarceration, also experience heightened social sensitivities compared to other groups (Sun & Benson, 2025). By integrating these perspectives, the study acknowledges that effective rehabilitation must account for both the specific criminogenic needs of the population and the varying status characteristics that impact how individuals navigate societal reactions during their reintegration.

The study further utilizes the Risk-Need-Responsivity (RNR) Model as its evidence-based operational standard for evaluating correctional effectiveness. This model posits that a reduction in recidivism is contingent upon four core principles: the risk principle, which matches the intensity of services to the offender's risk level; the need principle, which targets criminogenic needs; and the responsivity principle, which matches treatment methods to the client's learning style. Furthermore, the model includes the principle of professional discretion, allowing for deviations from these rules under unique circumstances. This framework serves as the benchmark against which the "Perceptual Gap" between stakeholders is measured, particularly as meta-analytical research confirms that the impact of adhering to these RNR principles is significantly enhanced when interventions are delivered within a community setting (Yukhnenko et al., 2023).

Finally, this study proposes the Integrated Community-Based Correction Theory (ICCT), a localized framework developed to address the unique complexities of the Philippine provincial justice system. The ICCT serves as a theoretical synthesis, anchoring its four interdependent pillars—community engagement, evidence-based rehabilitation, RNR-aligned interventions, and continuous feedback loops—directly upon established criminological foundations. It integrates Social Support Theory through the utilization of VPAs (Verdadero et al., 2023), Rehabilitation Theory to emphasize the "rehabilitative ideal" and individual resiliency (Marquez, 2025), and the RNR Model to ensure evidence-based operational standards. By merging these models, the ICCT moves beyond a "Surveillance-Only" approach, providing the analytical depth needed to bridge the "Functional Disconnect" in Northern Samar while prioritizing both systemic accountability and human dignity.



INTEGRATED COMMUNITY-BASED CORRECTION THEORY (ICCT)

A Conceptual Framework

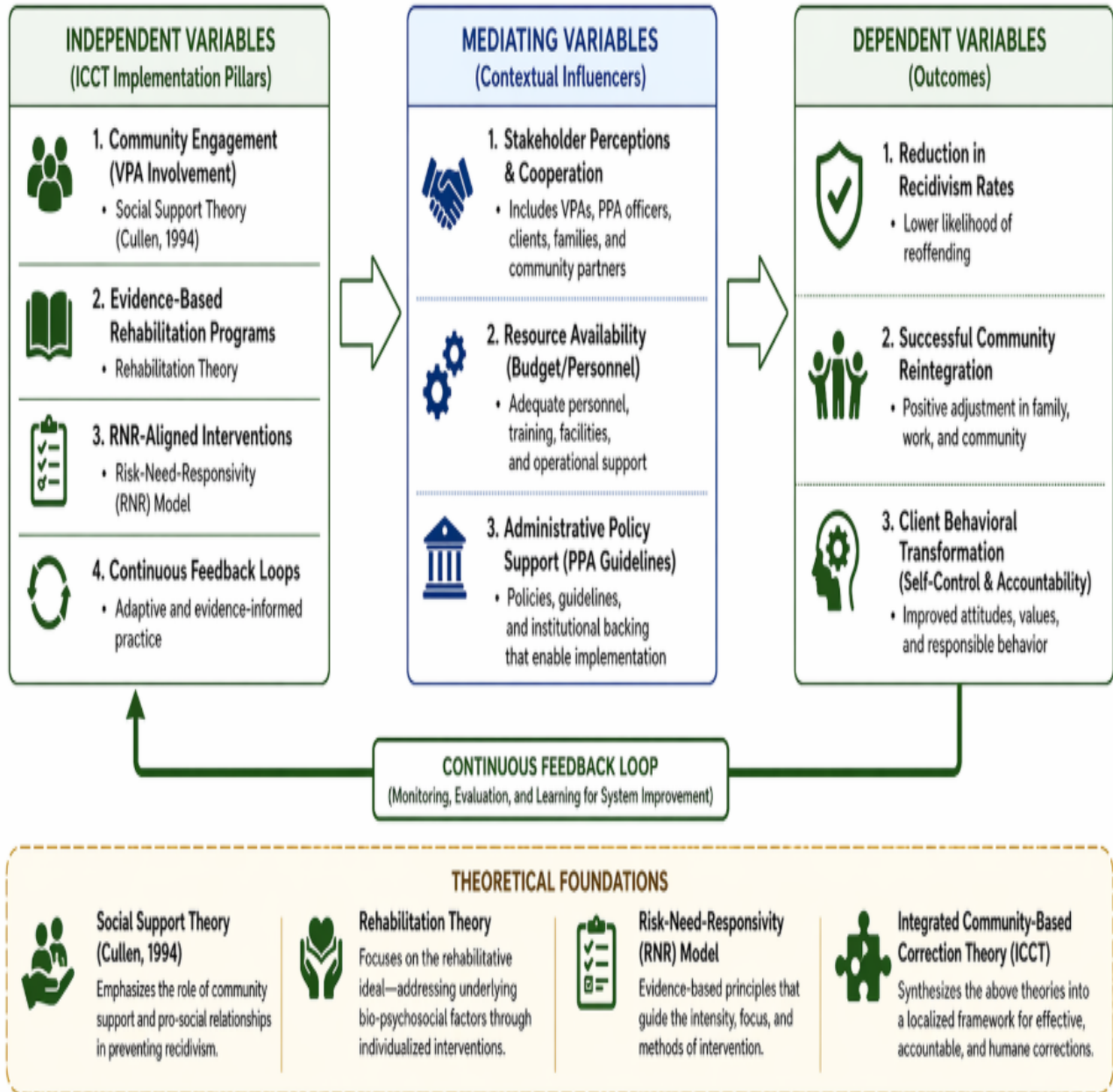


Figure 1. The Conceptual Framework of the Study based on the Integrated Community-Based Correction Theory (ICCT)



Statement of the Problem

Despite the institutionalization of community-based corrections in the Philippines, many probationers continue to encounter significant structural, social, and economic barriers that hinder successful reintegration into society. Existing studies and administrative evaluations largely emphasize procedural compliance and legal completion rates, often neglecting the gap between administrative performance and the actual lived experiences of probationers in the field. This disconnect limits the effectiveness of correctional programs in addressing criminogenic needs and reducing recidivism, particularly in rural and resource-constrained environments.

In the province of Northern Samar, local correctional data indicate that at least fifteen (15) probationers have reoffended within the past five years. This trend raises concerns regarding the adequacy of supervision practices, rehabilitation services, and reintegration support mechanisms. Furthermore, there is limited empirical research examining how community-based correctional components are implemented at the local level and how stakeholders—probationers, probation officers, and Volunteer Probation Assistants (VPAs)—perceive these processes.

Addressing these gaps is essential for strengthening correctional systems, improving rehabilitation outcomes, and enhancing public safety. Therefore, this study evaluates the implementation of community-based corrections in Northern Samar, identifies operational and perceptual challenges, and proposes an integrated intervention framework based on the Integrated Community-Based Correction Theory (ICCT) to support effective offender reintegration and reduce recidivism.

Research Objectives

General Objective:

To evaluate the implementation of community-based corrections in the province of Northern Samar as a mechanism for reducing recidivism.

Specific Objectives:

1. To determine the profile of the offenders in terms of age, gender, civil status, educational attainment, occupation, religion, and crime committed.
2. To assess the implementation of community-based corrections in Northern Samar across five core pillars: (a) probation, (b) post-sentence investigation, (c) supervision and monitoring, (d) rehabilitation programs, and (e) termination of probation.
3. To determine whether there is a significant difference in the perceptions of probationers, probation officers, and Volunteer Probation Assistants (VPAs) regarding the implementation of community-based corrections.
4. To identify the challenges encountered by respondents in the implementation of community-based corrections.
5. To determine whether there is a significant difference in the perceptions of the three groups of respondents regarding the challenges encountered during implementation.
6. To propose a comprehensive community-based correction program to help reduce recidivism in Northern Samar.

Research Questions

1. What is the profile of the probationers in Northern Samar in terms of demographic and criminological characteristics?
2. How do stakeholders assess the implementation of community-based corrections in Northern Samar across its core pillars?
3. Is there a significant difference in the perceptions of probationers, probation officers, and Volunteer Probation Assistants regarding the implementation of community-based corrections?
4. What are the common challenges encountered by respondents in the implementation of community-based corrections?
5. Is there a significant difference in the perceptions of the three groups of respondents regarding the challenges encountered?
6. What comprehensive community-based correction program can be proposed based on the findings of the study?



International Journal of Security, Defense, Criminal Justice, Law Enforcement, and Corrections (IJSDCJLEC)

P - ISSN: 3116-3904; E - ISSN: 3116-3912

PRC-CPD Accredited
Provider: PTR-2025-749

National Book Development Board
Registration as Book Publisher
(Print & Digital): 6312

Hypotheses

1. There is no significant difference in the perceptions of probationers, probation officers, and Volunteer Probation Assistants regarding the implementation of community-based corrections.
2. There is no significant difference in the perceptions of the three groups of respondents regarding the challenges encountered in the implementation of community-based corrections.

METHODS

Research Design

This study employed a descriptive-comparative research design to evaluate the implementation of community-based corrections in Northern Samar. The descriptive component was utilized to present the demographic and criminological profiles of the probationers and to quantify the level of program implementation across five core pillars. The comparative component was integrated to determine whether significant differences or degrees of agreement existed in the assessments provided by the three distinct stakeholder groups—probation officers, probationers, and Volunteer Probation Assistants (VPAs). This design allowed for a systematic description of naturally occurring variables, such as supervision practices and social stigma, without manipulation, providing an effective means to analyze the alignment of perceptions across different institutional roles.

Population and Sampling

The study population comprised key participants within the community-based correctional system of Northern Samar. The study was conducted across the Parole and Probation Administration (PPA) offices of both legislative districts: the First District based in Catarman and the Second District based in Laoang.

Sampling Technique. Purposive and convenience sampling were utilized to gather a viable sample within the available timeframe. Participants were selected based on specific inclusion criteria: (1) they were active probationers, (2) they were officially designated probation officers or Volunteer Probation Assistants (VPAs), and (3) they were currently affiliated with the PPA offices in the identified districts. This ensured that the individuals included had direct involvement in the system as either implementers or beneficiaries.

Participants. A total of 158 respondents participated in the study. This multi-stakeholder sample included 121 probationers, 4 probation officers, and 33 VPAs. The sample size was deemed adequate to provide a representative cross-section of the provincial correctional landscape, allowing for a balanced evaluation of the operational "Perceptual Gap" between those who manage the programs and those who undergo the rehabilitation process.

Instruments

To ensure content validity, the research instrument underwent rigorous validation by a Subject Matter Expert from the Public Attorney's Office (PAO) to align with the Philippine justice system's operational framework. It also underwent linguistic validation and translation into Northern Samar to ensure clarity for local respondents. A pilot test was conducted in the 1st and 2nd Districts of Northern Samar using functional proxy groups to preserve the primary respondent pool. Parolees served as proxies for probationers due to shared rehabilitative experiences, while inactive Volunteer Probation Assistants (VPAs) and PPA administrative staff acted as proxies for active volunteers and officers based on their specialized institutional knowledge.

The internal consistency of the instrument's primary evaluative scale was measured using Cronbach's Alpha, yielding a coefficient of 0.824. This result indicates high reliability, confirming that the scaled items consistently measure the intended constructs. Since the alpha value exceeds the standard threshold of 0.70, the instrument is confirmed as a robust tool for scholarly administration. Feedback from the pilot was used to refine the phrasing of specific questions, ensuring the final instrument was culturally appropriate, legally precise, and effectively tailored to the Northern Samar correctional context.

Data Collection

Data were gathered on July 16, 18, and 22, 2025, coinciding with the scheduled monthly reporting of the respondents at the Parole and Probation Administration (PPA) offices in the First and Second Districts of Northern Samar. Following formal coordination and the approval of communication letters, the researcher administered the instruments in person. Before administration, the purpose of the study and the voluntary nature of participation were



International Journal of Security, Defense, Criminal Justice, Law Enforcement, and Corrections (IJSDCJLEC)

P - ISSN: 3116-3904; E - ISSN: 3116-3912

PRC-CPD Accredited
Provider: PTR-2025-749

National Book Development Board
Registration as Book Publisher
(Print & Digital): 6312

clearly explained to the respondents. The researcher remained present to address any clarifications, and questionnaires were retrieved immediately upon completion to ensure a 100% response rate and maintain data integrity.

Treatment of Data

Data were analyzed using the following statistical treatments to systematically interpret the respondents' assessments:

1. **Frequency and Percentage Distribution** – Used to determine the profile of the offenders and describe the most prevalent characteristics relative to the entire population.
2. **Weighted Mean** – Applied to assess the level of implementation and the severity of challenges. This converted the qualitative ratings from the Likert scale into a numerical value for each specific pillar.
3. **Ranking** – Used to prioritize variables from highest to lowest, identifying which components were perceived as most effectively implemented.
4. **Kendall's Coefficient of Concordance (W)** – Utilized to infer the degree of agreement among the three groups (probationers, officers, and VPAs) and to determine if the variations in their rankings were statistically significant.

Ethical Considerations

Ethical clearance and coordination with partner institutions were secured prior to data collection through the formal approval of the Bicol College Graduate School and the Parole and Probation Administration (PPA) Regional Office. While this study was classified as a low-risk descriptive survey and did not require a separate Ethics Review Board (ERB) reference number, all protocols were vetted to ensure the protection of the respondents' rights.

Participants were provided with detailed information regarding the study's purpose, and written informed consent was obtained. Confidentiality and anonymity were strictly maintained by using coded identifiers, ensuring that no personal information could be traced back to the individuals. A respectful, non-coercive approach was maintained throughout the data collection to uphold the integrity of the research and ensure the dignity of all justice-involved participants.

RESULTS and DISCUSSION

The results and discussion were based on five research objectives concerning the implementation of community-based corrections (CBC) in Northern Samar. Using quantitative analysis and statistical testing, the study examined offender profiles, the implementation level of correctional pillars, perceptual gaps between stakeholders, and the structural challenges hindering reintegration.

1. Profile of the Probationers in Northern Samar

Themes

The Vulnerable Provider and Necessity-Driven Offenses

Variable	Category	f	Percentage
Age	Prime-Age (21–40 Years Old)	67	55.37%
	Others (Under 21 / Over 40)	53	43.80%
	Not Mentioned	1	0.83%
Gender	Male	112	92.56%
	Female / Not Mentioned	9	7.44%
Education	Limited Education (Elementary/HS)	92	76.03%
	Higher Education / Others	29	23.97%
Employment	Unstable/Underemployed	55	45.45%
	Employed (Full-time)	41	33.88%
	Others / Not Mentioned	25	20.67%
Offense Profile	Environmental Crimes (PD 705)	43	35.54%
	Drug-Related Offenses (RA 9165)	23	19.01%
	Other Survival-Driven Offenses	22	18.18%
	Not Mentioned	33	27.27%
Total		121	100.00%



International Journal of Security, Defense, Criminal Justice, Law Enforcement, and Corrections (IJSDCJLEC)

P - ISSN: 3116-3904; E - ISSN: 3116-3912

PRC-CPD Accredited
Provider: PTR-2025-749

National Book Development Board
Registration as Book Publisher
(Print & Digital): 6312

1.1. Socioeconomic Vulnerability as a Precondition

The data illustrated that the typical probationer in Northern Samar was a prime-age male (21–40 years old) characterized by significant educational and economic marginalization. With 76% having limited education and 45.5% lacking stable employment, criminal involvement appeared frequently as a byproduct of structural deprivation. While urban data from the Bureau of Jail Management and Penology–National Capital Region (BJMP-NCR) identified young, married males as having a higher tendency to recidivate (Delfin et al., 2023), the Northern Samar profile suggested that risk in this rural province was rooted in the informal economy—where a lack of formal jobs led to high-risk survival activities.

Rather than viewing the offender through a lens of inherent deviance, these findings aligned with the Special Resiliency Theory, which posited that an individual’s background—in this case, the status of a "vulnerable provider"—dictated their interaction with justice (Sun & Benson, 2025). In a province where natural resource dependency was high, individuals with low human capital often conflicted with the law while attempting to fulfill household roles. This suggested that their resiliency and successful reentry were deeply tied to securing stable, legal livelihoods.

1.2. The "Green" Crime Landscape (PD 705)

The offense profile revealed a specialized landscape dominated by environmental violations. Violations of the Revised Forestry Code (Presidential Decree 705) accounted for 35.5% of cases, surpassing drug-related offenses (19%). This indicated a systemic conflict between environmental preservation laws and the survival strategies of the rural poor. This contrasted with the findings of Delfin et al. (2023), where drugs and fraud drove recidivism. In Northern Samar, illegal logging emerged as a "necessity-driven offense," referring to crimes committed to meet basic survival needs. This underscored the need for localized frameworks that addressed the specific socioeconomic drivers of rural environmental crimes rather than relying solely on urban-based correctional models.

2. Assessment of CBC Implementation

Themes

The Paper-Strong System and the Presence Gap

INDICATORS	RESPONDENTS							
	Probationers		Probation		VPA's			
	TWM	AI	TWM	AI	TWM	AI	TWM	AI
A. PROBATION								
Existence of established probation procedures aligned with national policies.	3.05	A	4	SA	3.45	SA	3.5	SA
Availability and accessibility of probation services in local communities.	3.08	A	4	SA	3.33	SA	3.47	SA
Adequate staffing and resources of probation offices	2.2	D	2.25	D	2.27	D	2.24	D
Clarity and communication of probation conditions to offenders.	3.23	A	3.75	SA	3.45	SA	3.48	SA
Degree of offender compliance with probation rules.	3.35	SA	4	SA	3.22	A	3.52	SA
Timeliness of probation placement after court decisions.	3.02	A	3.5	SA	2.97	A	3.16	A
Level of support provided to probationers (e.g., employment referral, housing, etc.).	3.02	A	3.75	SA	3.12	A	3.3	SA
AWM	2.99	A	3.61	SA	3.12	A	3.24	A

INDICATORS	RESPONDENTS							
	Probationers		Probation		VPA's			
	TWM	AI	TWM	AI	TWM	AI	TWM	AI
B. POST-SENTENCE INVESTIGATION								
Availability of trained probation officers to conduct investigations	2.9	A	4	SA	2.21	D	3.04	A
Timely preparation and submission of post-sentence investigation reports.	3.06	A	4	SA	3.3	SA	3.45	SA
Use of standard tools and forms in conducting investigations.	3.01	A	4	SA	3.33	SA	3.45	SA
Accuracy and thoroughness of social case studies and risk assessments	3.3	SA	4	SA	3.02	A	3.44	SA
Incorporation of community and family background in investigation reports.	2.96	A	4	SA	3.15	A	3.37	SA
Utilization of investigation results in sentencing and rehabilitation planning.	2.9	A	4	SA	3	A	3.3	SA
AWM	3.02	A	4	SA	3	A	3.34	SA



International Journal of Security, Defense, Criminal Justice, Law Enforcement, and Corrections (IJSDCJLEC)

P - ISSN: 3116-3904; E - ISSN: 3116-3912

PRC-CPD Accredited
Provider: PTR-2025-749

National Book Development Board
Registration as Book Publisher
(Print & Digital): 6312

INDICATORS	RESPONDENTS							
	Probationers		Probation		VPA's			
	TWM	AI	TWM	AI	TWM	AI	TWM	AI
C. SUPERVISION AND MONITORING								
Frequency and regularity of probation officer visits to offenders	2.19	D	3.5	SA	2.85	A	2.85	A
Availability of supervision plans tailored to individual risk levels.	3.13	A	4	SA	2.85	A	3.33	SA
Use of monitoring tools (e.g., home visits, community service tracking).	3.08	A	4	SA	3.09	A	3.39	SA
Documentation and record-keeping of offender progress.	3.06	A	4	SA	2.94	A	3.33	SA
Responsiveness to violations and infractions during probation.	3.07	A	4	SA	2.24	D	3.1	A
Coordination between probation officers and local barangay or law enforcement units.	3.19	A	3.75	SA	3.33	SA	3.42	SA
AWM	2.95	A	3.88	SA	2.88	A	3.24	A

INDICATORS	RESPONDENTS							
	Probationers		Probation		VPA's			
	TWM	AI	TWM	AI	TWM	AI	TWM	AI
D. REHABILITATION								
Availability of structured rehabilitation programs (e.g., livelihood, counseling).	3.21	A	4	SA	2.94	A	3.38	SA
Participation rate of offenders in rehabilitation activities.	2.98	A	4	SA	2.91	A	3.3	SA
Collaboration with community organizations for program delivery.	3.16	A	3.75	SA	3.09	A	3.33	SA
Monitoring of rehabilitation outcomes (behavioral, attitudinal change).	3.11	A	4	SA	3.27	SA	3.46	SA
Integration of family and community support in rehabilitation.	2.93	A	4	SA	3.09	A	3.34	SA
Presence of referral mechanisms for mental health or substance abuse support.	2.85	A	3.5	SA	2.97	A	3.11	A
AWM	3.04	A	3.88	SA	3.04	A	3.32	SA

INDICATORS	RESPONDENTS							
	Probationers		Probation		VPA's			
	TWM	AI	TWM	AI	TWM	AI	TWM	AI
E. TERMINATION OF PROBATION								
Clear criteria and procedures for early or successful termination.	3.31	SA	4	SA	3.09	A	3.47	SA
Timely processing of termination requests.	3.26	SA	4	SA	3	A	3.42	SA
Documentation of compliance with all probation conditions before discharge.	3.14	A	4	SA	2.97	A	3.37	SA
Post-termination follow-up or reintegration support programs.	3.14	A	3.75	SA	3.12	A	3.34	SA
Rate of successful probation completions without relapse or re-offense.	3.17	A	3.5	SA	3.06	A	3.24	A
Issuance of formal certificates or records of completion.	3.13	A	4	SA	2.94	A	3.36	SA
AWM	3.19	A	3.88	SA	3.03	A	3.37	SA

2.1. From Investigation to Termination: The Implementation Hierarchy

The assessment of the five pillars—Probation, Pre-Sentence Investigation (PSI), Supervision, Rehabilitation, and Termination—indicated a generally robust implementation level, with Termination earning the highest rating (3.37). However, a consistent "perception gap" suggested that while the system was "paper-strong" (efficient in documentation and administrative processing), it remained "presence-light" (lacking physical presence, field interaction, and community-level engagement).

This administrative efficiency was evident in the "cliff effect" at termination—a phenomenon where the abrupt withdrawal of institutional support creates a sharp drop-off in resources and oversight. This lack of structured follow-up (3.34) left graduates without a social safety net, forcing a premature transition to total independence. This sudden shift becomes a critical point of vulnerability, highlighting the need for sustained resiliency during reentry.

This aligns with the findings of Sun and Benson (2025), who noted that successful reentry is often dictated by an individual's internal resiliency and their specific interaction with the justice system. However, for this resiliency



International Journal of Security, Defense, Criminal Justice, Law Enforcement, and Corrections (IJSDCJLEC)

P - ISSN: 3116-3904; E - ISSN: 3116-3912

PRC-CPD Accredited
Provider: PTR-2025-749

National Book Development Board
Registration as Book Publisher
(Print & Digital): 6312

to manifest, individuals must develop "redemption scripts"—internalized narratives where they redefine their identity from "offender" to "reformed citizen."

Without a structured reintegration framework that bridges the gap between institutional oversight and community linkages, these scripts are easily derailed by the realities of the cliff effect. As supported by Marquez (2025), behavioral transformation cannot exist in a vacuum; it must be reinforced by a framework that actively connects the individual back to community-based support systems, ensuring the "paper-strong" success of termination translates into long-term desistance.

2.2. The Supervision "Presence Gap"

A critical point of friction was found in Supervision and Monitoring, where probationers rated the "frequency of visits" at a "Disagree" level (2.19). This revealed that the system relied heavily on rural resilience—specifically using *barangay* (local village or neighborhood) coordination (3.42) to fill the gap left by understaffed personnel. This logistical struggle mirrored findings in Isabela Province, where structural and logistical barriers were found to significantly undermine the rehabilitative potential of mandatory reporting (Tad-Awan & Lapitan, 2026).

To mitigate these gaps, the system relied on Volunteer Probation Assistants (VPAs) as force-multipliers. While the Parole and Probation Administration (PPA) effectively leverages such multi-sectoral collaborations (Verdadero & Donato, 2026), volunteers often face operational challenges and safety threats that can hinder their overall effectiveness (Verdadero et al., 2023). This underscores a core necessity in the Integrated Community-Based Correction Theory (ICCT): supervision cannot rely on office-bound checks alone. The findings of Tad-Awan and Lapitan (2026) suggest that improving the efficacy of corrections in the Philippines requires adaptive, technology-enabled supervision strategies to bridge the geographical and resource-driven "presence gap" inherent in provincial settings.

3. Significant Differences in Implementation

Themes

Goal Displacement and Perceptual Divergence

Indicators	Computed	Computed	Tabulated	Decision/Interpretation
	W	t-value	t-value at 1%	
a. Probation	0.85	15.3	2.58	Significant
b. Post-Sentence Investigation	0.35	5.25	2.58	Significant
c. Supervision and Monitoring	0.4	6	2.58	Significant
d. Rehabilitation	0.32	4.8	2.58	Significant
e. Termination of Probation	0.31	4.65	2.58	Significant

Statistical analysis provided a definitive rejection of the null hypothesis across every implementation variable (Kendall's W). For the indicator of Probation, the study recorded high statistical significance, demonstrating a state of "goal displacement." This occurred when the system succeeded on paper through high officer ratings but failed in the lived experience of the offender. This suggested that the framework was administrator-centric (focused on office requirements) rather than client-centered (focused on the offender's needs).

This divergence highlighted a failure in the responsiveness of the system, where supervision styles failed to match the client's lived reality. Without reaching a "shared reality," the relational power—the ability of the officer to influence the offender's behavior—was lost. This gap was echoed by Tad-Awan and Lapitan (2026), where a lack of alignment between individual needs and institutional support was found to undermine effective monitoring. In Northern Samar, this gap acted as a major barrier to the Integrated Community-Based Correction Theory (ICCT), which required a continuous feedback loop to ensure that the administrative objectives of the system translated into actual behavioral change and successful desistance (Hinck et al., 2023).



4. Challenges Encountered in CBC Implementation

Themes

The Rural Penalty and the Stigma Barrier

Challenges Encountered by the Respondents on the Implementation of Community-Based Correction in Reducing Recidivism among Offenders in Northern Samar	Probationers		Probation Officers		VPA's		Sum of Ranks (R)	R ²	Final Rank
	f	Rank	f	Rank	f	Rank			
Lack of public awareness and understanding of community-based correction programs	91	2	2	4	29	2	8	64	3
Inadequate number of trained probation officers.	117	1	3	2	30	1	4	16	1
Limited budget and logistical support for probation offices	87	3	4	1	27	3	7	49	2
Delayed submission of post sentence investigation reports	37	9	0	11.5	5	13.5	34	1156	11.5
Incomplete or inaccurate information gathered during social case investigations/Post Sentence Investigation.	36	10	0	11.5	15	6.5	28	784	9
Irregular or infrequent supervision and monitoring of probationers.	79	4	0	11.5	15	6.5	22	484	6.5
Lack of transportation and resources for field visits by officers	72	6	2	4	21	4.5	14.5	210.25	4
Weak coordination between probation offices and local government units (LGUs)	49	8	0	11.5	4	15	34.5	1190.25	13
Limited access to rehabilitation programs (e.g., livelihood, counseling)	57	7	1	6.5	14	8.5	22	484	6.5
Low participation of probationers in available rehabilitation activities	32	11	0	11.5	10	10	32.5	1056.25	10
Absence of follow-up programs after probation termination	31	12	2	4	7	11.5	27.5	756.25	8
Bureaucratic delays in processing termination of probation	27	13	0	11.5	5	13.5	38	1444	14.5
Stigma or negative community perception of probationers	73	5	1	6.5	21	4.5	16	256	5
Poor documentation and recordkeeping during monitoring	18	15	0	11.5	7	11.5	38	1444	14.5
Lack of clear guidelines and criteria for termination of probation	22	14	0	11.5	14	8.5	34	1156	11.5
Total of Squared Rank Sum:								10, 550	

4.1. Structural Constraints and Resource Depletion

The data revealed a high level of convergence regarding systemic challenges: inadequate personnel (Rank 1) and limited budget (Rank 2). These results revealed a "rural penalty"—the unique disadvantage faced by rural agencies where the tyranny of distance and lack of transportation (Rank 4) forced the Parole and Probation Administration (PPA) to be office-bound. This created service deserts in remote areas where intensive rehabilitation became a logistical impossibility.

This environment mirrored the findings of Verdadero and Donato (2026), who noted that while partnerships were the cornerstone of Philippine reintegration, inadequate resources continued to hinder delivery. Furthermore, these constraints were identical to those found in Isabela Province, where resource limitations directly undermined the overall rehabilitative potential of supervision (Tad-Awan & Lapitan, 2026).

4.2. Public Safety and Law Enforcement Coordination

The resource-strained environment forced the system into a compliance-oriented mode where survival took precedence over individualized reform. This created a critical gap in public safety governance. To strengthen reintegration, the findings indicated a need for explicit police-community coordination. Since probation officers were often office-bound, local law enforcement, specifically the Philippine National Police (PNP), and community policing units played a vital role in monitoring and providing a secure environment for reintegration. Effective coordination between the PPA and the Northern Samar Provincial Police Office (NSPPO) ensured that probationers were supervised not just administratively, but through a unified public safety net that reduced recidivism risks.



5. Significant Differences in Challenges

Themes

Universal Consensus and Functional Divergence

Indicators (Challenges)	Computed W	Computed t-value	Tabulated t-value at 1%	Decision / Interpretation
Inadequate number of trained probation officers	0.42	9.5	2.58	Significant
Limited budget and logistical support	0.38	8.65	2.58	Significant
Lack of public awareness and understanding	0.35	7.98	2.58	Significant
Coordination and Resource limitations (LGUs/Field Visits)	0.31	7.05	2.58	Significant
Social Stigma and Participation Issues	0.29	6.6	2.58	Significant

Statistical findings confirmed a universal consensus among respondents regarding the severity of systemic challenges (Kendall’s W). This indicated that the lack of staff and budget were objective systemic realities rather than subjective perceptions. However, a functional divergence existed in how these challenges were prioritized. While officers prioritized administrative delays, probationers were more heavily impacted by social stigma (Rank 5).

This divergence reflected the stickiness of criminal labels, where society presumed a criminal history regardless of actual behavior (Fader et al., 2022). Furthermore, the probationers’ focus on irregular monitoring suggested that when personnel were spread too thin, it led to a neglect of well-being that actively discouraged participation in rehabilitation (Abrifor et al., 2023).

The ICCT proposed continuous feedback loops to resolve this. By synchronizing the administrative pressure felt by officers with the stigma felt by probationers, the system could move toward horizontal communication—where all stakeholders coordinated their response to systemic challenges, transforming the process into a collaborative effort toward social healing.

Conclusions

The findings of the study indicate that community-based corrections in Northern Samar operate within a context of significant socioeconomic vulnerability, where low educational attainment and unstable employment contribute to survival-driven criminal behavior. While the system demonstrates strong procedural compliance, a persistent gap exists between administrative performance and field-level supervision, limiting the effectiveness of rehabilitation and reintegration efforts.

The results highlight that insufficient personnel, logistical constraints, and limited post-supervision support weaken the capacity of correctional programs to sustain long-term behavioral change. The presence of perceptual differences among stakeholders further suggests the need for a more client-centered and responsive correctional framework.

From a criminological and public safety perspective, the study contributes to the understanding of how rural correctional systems operate under resource limitations and how these conditions affect recidivism. The findings underscore the importance of integrating community-based support, adaptive supervision strategies, and evidence-based rehabilitation models to strengthen justice system performance and enhance public safety governance.

Recommendations

Based on the findings of the study, the following recommendations are proposed:

1. The Department of Justice–Parole and Probation Administration (DOJ–PPA), in coordination with Local Government Units (LGUs) and relevant agencies, may implement an Integrated Community-Based Correction and Empowerment Program to address the structural and social needs of probationers.



2. Livelihood training programs and access to basic education may be institutionalized as core components of rehabilitation to reduce economically driven offenses and support sustainable reintegration.
3. Mobile supervision and outreach initiatives may be developed to improve monitoring and service delivery in geographically remote areas, addressing the identified supervision gaps.
4. Trauma-informed counseling, substance abuse intervention programs, and clinical referral systems may be strengthened to support behavioral transformation beyond administrative compliance.
5. Community awareness campaigns and reintegration support initiatives may be enhanced to reduce stigma and improve public acceptance of rehabilitated individuals.
6. The role of Volunteer Probation Assistants (VPAs) may be expanded through capacity-building programs, training, and institutional support to improve community-based supervision and stakeholder collaboration.

REFERENCES

- Abrifor, C. A., Popoola, S. S., & Essien, G. U. (2023). Inmates' rehabilitation programmes and recidivism in the selected correctional facilities in south-western Nigeria: A literature review. *International Journal of Criminology and Security Studies*, 1(1), 108-128. <https://fjcss.fuoye.edu.ng/index.php/fjcss/article/view/47>
- Cullen, F. T. (1994). Social support as an organizing concept for criminology: Presidential address to the academy of criminal justice sciences. *Justice Quarterly*, 11(4), 527-559. <https://doi.org/10.1080/07418829400092421>
- Delfin, M. D. B., Dalugdog, W. D., Dausan, A. F., & Villa-Buena, E. S. (2023). Measuring recidivism rate: Its predictive variables and antecedents. *International Journal of Multidisciplinary: Applied Business and Education Research*, 4(10), 3787-3799. <https://doi.org/10.11594/ijmaber.04.10.29>
- Fader, J. J., Henson, A., & Brey, J. (2022). "I don't want to be a statistic": Racial-criminal stigma, redemption bids, and redemptive generativity. *Crime & Delinquency*. <https://doi.org/10.1177/00111287221131037>
- Hamja, & Al Ghifari, B. A. (2024). Analysis of community-based correctional implementation from a legal issues perspective: A global survey. *Pena Justisia*. <https://doi.org/10.31941/pj.v23i3.5518>
- Hinck, A. S., Withers, L., Hinck, S. S., & Lee, R. L. (2023). Post-incarcerated individuals' online narratives: Stories of desistance and "success." *Communication Quarterly*, 71(2), 219-242. <https://doi.org/10.1080/01463373.2022.2154167>
- Loeffler, C. E. (2022). The impact of incarceration on recidivism. *Annual Review of Criminology*, 5, 133-152. <https://doi.org/10.1146/annurev-criminol-030920-112506>
- Marquez, J. (2025). The impact of the Therapeutic Community Modality Program (TCMP) on re-offender rate among Person Deprived of Liberty (PDL) in Lucena City District Jail Female Dormitory, Quezon Province. *APCORE Online Journal*, 1(2). <https://doi.org/10.65232/mxvwyg36>
- Norman, M., & Ricciardelli, R. (2021). Operational and organisational stressors in community correctional work: Insights from probation and parole officers in Ontario, Canada. *Probation Journal*. <https://doi.org/10.1177/0264550520984253>
- Opsal, T., & Luxton, I. (2024). Gender-responsive programming for women in the community corrections context: A scoping review. *Corrections*, 9(5), 500-516. <https://doi.org/10.1080/23774657.2023.2278192>
- Sun, D., & Benson, M. L. (2025). Resiliency in reentry, sensitivity in strangers: An examination of white-collar offenders and their reentry. *Justice Quarterly*, 42(1), 78-106. <https://doi.org/10.1080/07418825.2025.2460588>



International Journal of Security, Defense, Criminal Justice, Law Enforcement, and Corrections (IJSDCJLEC)

P - ISSN: 3116-3904; E - ISSN: 3116-3912

PRC-CPD Accredited
Provider: PTR-2025-749

National Book Development Board
Registration as Book Publisher
(Print & Digital): 6312

Tad-Awan, F. P. F., & Lapitan, A. R. (2026). Narratives of accountability and change: A qualitative analysis of monthly reporting in probation rehabilitation pathways and supervision challenges. *Veredas do Direito*. <https://doi.org/10.18623/rvd.v23.n2.3985>

Verdadero, J. C., & Donato, L. M. (2026). Community-based alternatives to incarceration: The role of the Parole and Probation Administration in the Philippines. *European Journal of Probation*. <https://doi.org/10.1177/20662203251413478>

Verdadero, J. C., Necida, J. E., Licadang, J. F., Arangorin, O. B., & Laurencio, E. J. T. (2023). Volunteer probation assistant system: The case. *International Journal for Multidisciplinary Research*, 5(5). <https://www.ijfmr.com/papers/2023/5/7429.pdf>

Yukhnenko, D., Farouki, L., & Fazel, S. (2023). Criminal recidivism rates globally: A 6-year systematic review update. *Journal of Criminal Justice*, 84. <https://doi.org/10.1016/j.jcrimjus.2023.102115>